

Key Features:

- Heavy duty construction
- Low profile, space optimized design
- Laminar vents
- Integrated locking feet
- Designed with Cardioid Sub Arrays in mind

Applications:

XXXXXXX XXXX
XXXXXXX XXXX
XXXXXXX XXXX
XXXXXXX XXXX
XXXXXXX XXXX

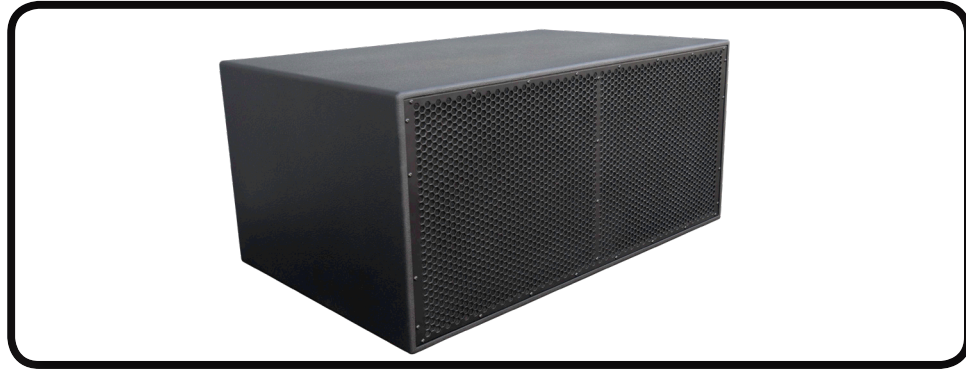
The M218i Subwoofer is a high efficiency, high performance sub-bass loudspeaker with exceptionally high power handling. The M218i features two long excursion, high power handling 18" cone drivers mounted in a mechanically and acoustically optimized bass reflex cabinet with laminar venting. Port turbulence is virtually eliminated and distortion is minimized at high drive levels via a large, flared, symmetrical laminar vent.

The M218i enclosure was designed with both portable use and installation in mind. It features the option of up to 24 integrated fly points and optional array frames that allow for mounting to ceilings and the creation of traditional and cardioid flown arrays. The compact profile allows the M218i to fit easily under stages or up tight to ceilings.

The enclosure is constructed of premium birch hardwood plywood and is coated with a weather and wear resistant urethane hybrid finish. Components in the front of the enclosure are protected by a steel grill made from perforated steel that is coated with heat cured epoxy powder and lined with acoustically transparent foam. All optional rigging components are weather and corrosion protected with a heat cured epoxy powder coated finish.

The M218i cabinet features an impact resistant polyurethane paint finish, and an integrated handle. The loudspeaker system is available as weatherized (-X) or in white (-W) or custom colors (-C). The weatherized option provides and IP54 rating.

The optimum processed loudspeaker solution for the RMS-Acoustics M218i is the Linea Research 44M06 series and 44C06 series amplifiers, with propriety presets provided by RMS-Acoustics. All other Linea Research M series and C series amplifiers can also be used.



System Specifications:

Frequency Range (-10dB) ^1	27 Hz - 150 kHz	Assumed 100 Hz Low pass filter 0dB point taken at 60 Hz, Unprocessed
Frequency Response (+/-3dB)	33 Hz - 120 kHz	Assumed 100 Hz Low pass filter 0dB taken at 60 Hz, Unprocessed
Sensitivity (dB SPL, 1w, 1m)	104dB 100dB	60 Hz 30 Hz
Maximum SPL Continuous Avg	135dB 137dB	27 Hz - 100 kHz 50 Hz - 150 kHz
Maximum SPL Peak	141dB 143dB	27 Hz - 100 Hz 50 Hz - 150 kHz
Long Term Power Rating (IEC)		1000W each Transducer, 4000W Peak 100 Hr 2000W Parallel, 8000W Peak 100 Hr
Transducer Power Rating (AES)		1500W AES each Transducer, 3000W Peak 2 Hr 3000W AES Parallel, 6000W Peak 2 Hr
Transducer - Low Frequency Driver	SPKR-18-0002	2x 18" weather resistant, long excursion, 4" coil, die cast basket, vented magnet, Alumium heat sink and demodulating rings
PHYSICAL:		
Input Connectors		Dual Neutrik NL4MP Connectors
Enclosure Materials		15 and 18mm Birch Hardwood Ply 1.3mm layers
Grille Materials		Cold Rolled steel, Epoxy powder coat, Hexagonal Punch Pattern, Acoustically transparent black foam backing
Finishes		Black finish (Standard) Urethane Blend, Highly Impact and UV resistant textured fine grain coating. Additional Finishes available - See Options Below
Suspension Attachment	M218i-20	4 Top, 4 Bottom, 4 Back, 4 per side) 3/8-16 threaded brackets
Dimensions		47.1" w x 21.6" d x 29.95" h (1196 mm x 549 mm x 761 mm)
Weight		225 Lbs (102 kg) Net
Ordering Options		M218R1, M218R2, M218i, M218F
Finish Options		-X (Weatherized), -W (White), -C (Custom Color) Upcharge applies
Optional Accessories	M218CART1	Welded Aluminum Cart, Holds up to 4x M218
	M218CART2	Welded Aluminum Cart, Holds 1x M218 on end
	M218CART4	Plywood Cart, Hold up to 3x M218
	WB-M218R2	Locking Wheel Board for M218R2. Requires R2 version with catch plates installed.
	M218COVER1	Travel cover for 2-high M218 on cart
	M218COVER2	Travel cover for 3-high M218 on cart
	M218COVER3	Travel cover for single M218 on end cart
	M218COVER4	Travel cover for single M218 on face wheel board. Applicable to M218R2 ONLY
	M218RS2	Flown vertical installation rigging kit, 2 Box
	M218RS3	Flown vertical installation rigging kit, 3 Box
	M218RS4	Flown vertical installation rigging kit, 4 Box
	M218RS5	Flown vertical installation rigging kit, 5 Box
	EYEBOLT4	Kit of (4) 3/8-16 Eye bolt Kit for M218i
		Free field, semi anechoic conditions. To compare with half space measurements, add 6dB to maximum output specifications.
		1. Full Space, 4pi conditions
		2. Measured Maximum SPL, based on power compression observation of 3dB
		3. IEC Shaped pink noise with 6dB Crest Factor
		4. AES Standard AES2-2012, one decade pink noise with 6dB Crest factor within device's applicable operating band, free air. Standard AES 2 hr rating are specific for low frequency transducers.